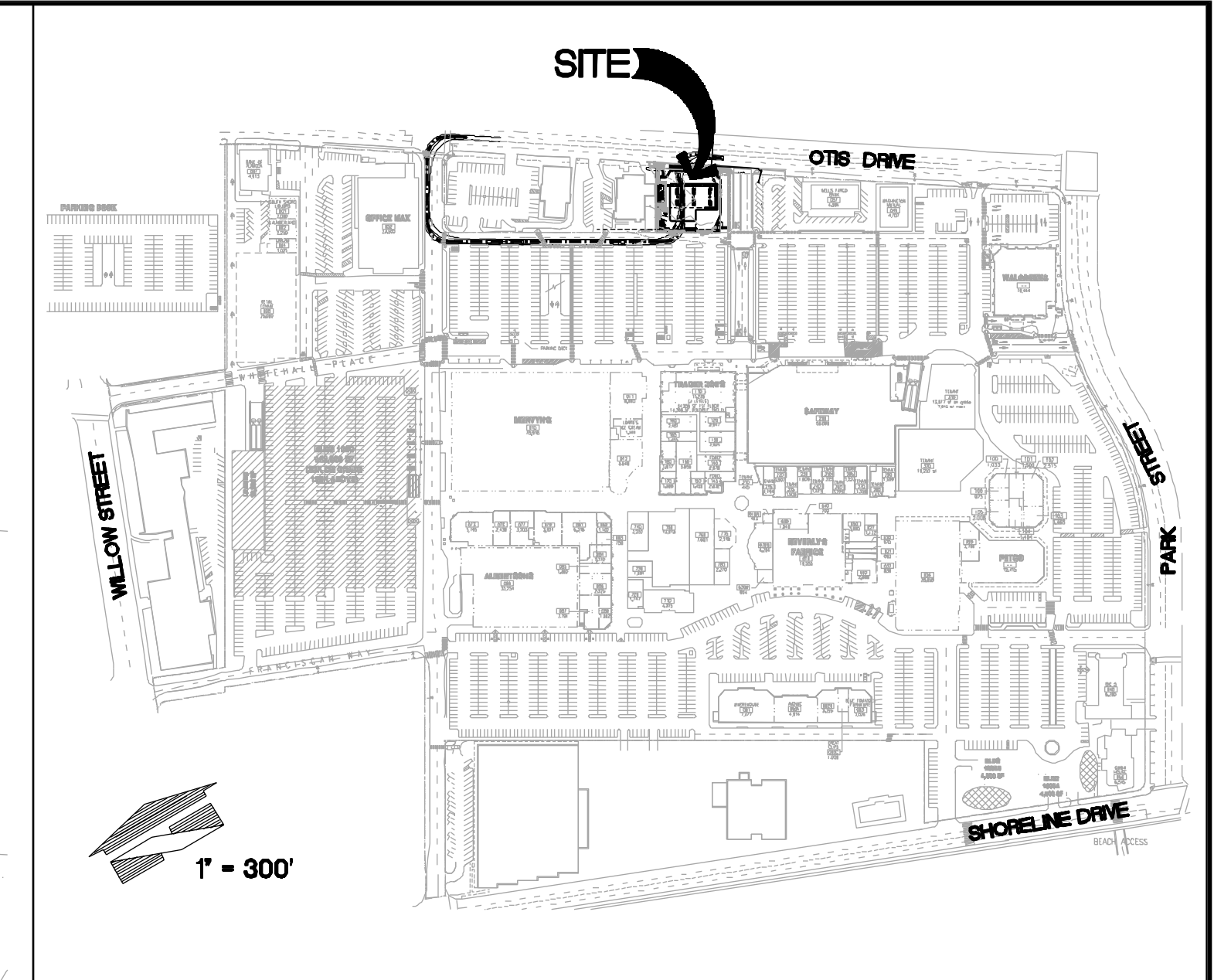
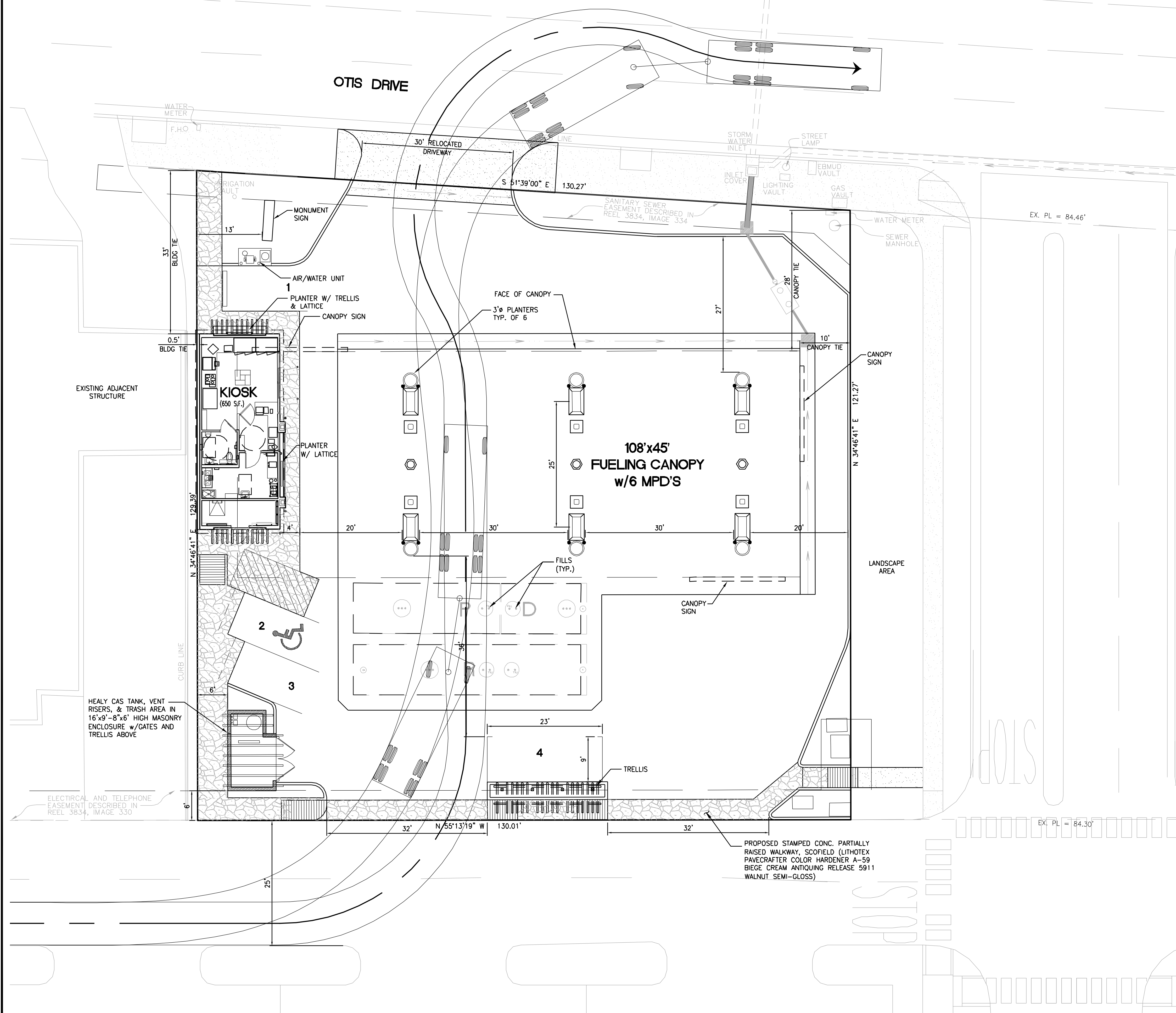
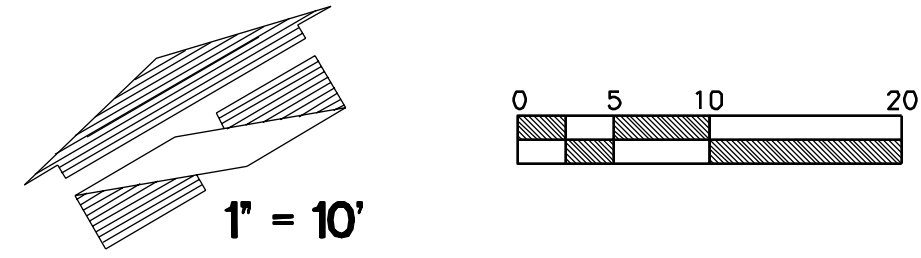


PRELIMINARY SITE PLAN



SITE MAP



18215 72ND AVENUE SOUTH
 KENT WA 98032
 (425)251-8222
 (425)251-8762 FAX
 CIVIL ENGINEERING, LAND PLANNING,
 SURVEYING, ENVIRONMENTAL SERVICES



| REVISIONS |
|-----------|
| |
| |
| |
| |

| SUBMITTAL DATES |
|----------------------------|
| OWNER: ---/---/--- |
| REG. AGENCIES: ---/---/--- |
| O.T.B.: ---/---/--- |

| |
|--------------------------------|
| PROJECT NO. BCE 11435 |
| DRAWN BY: JMW |
| CHECKED BY: DBG |
| CAD SAVED NAME: 11435 PS-1.dwg |

SAFeway STORE #2708
 ALAMEDA, CALIFORNIA
 2234 OTIS DRIVE
 SOUTH SHORE SHOPPING CENTER
 ALAMEDA, CALIFORNIA

SHEET TITLE
PRELIMINARY SITE PLAN
 6/06/07

SHEET NO.
PS-1

NOTE:
 1. ALL EXISTING CROSS ACCESS EASEMENTS WITH THE SOUTH SHORE SHOPPING CENTER WILL BE AMENDED TO ACCURATELY REPRESENT THE REVISED CROSS ACCESS FOR THE SAFeway FUEL CENTER PROJECT.

BOUNDARY DISCLAIMER:
 THIS SITE PLAN BOUNDARY IS BASED ON THE ALTA/ACSM LAND TITLE SURVEY DATED JANUARY 9TH, 2004, PREPARED BY RICHARD L. LANGFORD LS #6895.

File: P:\11000s\11435\preliminary\opt E\11435 PS-1.dwg Date/Time: 6/6/2007 5:39 PM Scale: 1"=0' = 1"=0' J:\MEDDLE\refr...z11435.dwg, z11435.dwg, z11435.dwg, CON-SRF.dwg